

# DYNASTY<sup>®</sup>

Acetabular Cup System



Create Motion.<sup>®</sup> **WRIGHT.**



- Modular Cup System
- Multiple Bearing Surfaces with Screw Fixation
- Large Diameter Heads

# The Making of a Dynasty ...

The DYNASTY® Acetabular Cup System is the fourth generation of Wright's modular cup systems. The INTERSEAL® System was launched in 1995 and only accepted polyethylene liners. In 1998 Wright launched the TRANSCEND® System that accommodated ceramic and metal bearing surfaces in the same cup design. Then in 2000, Wright launched the LINEAGE® System which was the first in its class to have the same cup that accepted ceramic, metal, and polyethylene liners.

The combination of twelve years of clinical history and four different iterations of modular systems have all led to the launch of the DYNASTY® Acetabular Cup System in May 2007. The DYNASTY® System incorporates the advantages of a modular cup system

with multiple bearing surface screw fixation, all while accommodating large diameter heads. The DYNASTY® System accepts BFH® CoCr heads up to 56mm and BCH® large diameter ceramic heads up to 54mm.

The latest addition to the DYNASTY® product line incorporates **BIOFOAM® CANCELLOUS TITANIUM™ Material**, which represents the newest generation of ingrowth fixation technology. This innovative material mimics natural trabecular architecture to ensure sustainable rigid fixation through natural ingrowth within a metallic implant that provides the long-term strength and stability required in today's orthopaedic implants.

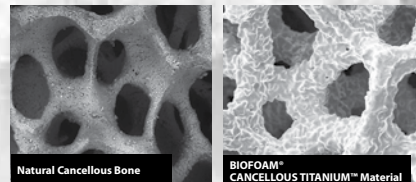


## The Science of BIOFOAM® CANCELLOUS TITANIUM™ Material

### FIXATION WITH BITE™

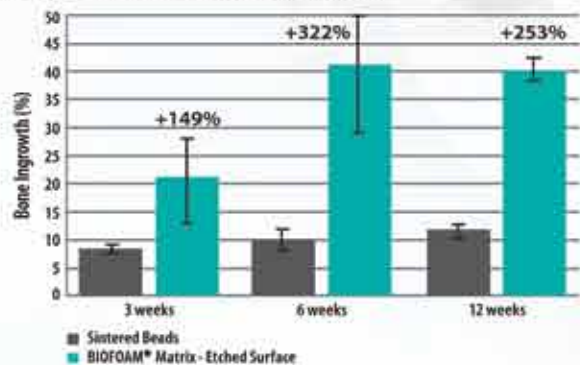
- Immediate rigid fixation compared to beads
- Decreased chance of spin-out<sup>1</sup>
- Fixation with multiple bearing surfaces with big head technology

1. Compared to Wright sintered beads or Ti plasma spray. Data on file at Wright.

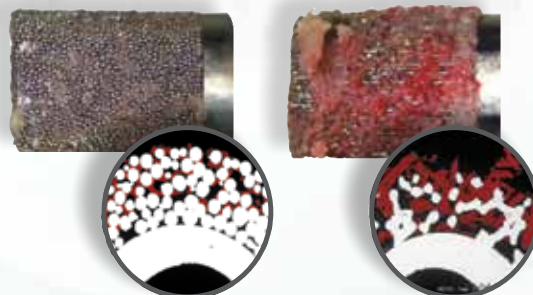


Pure Titanium construct that closely models natural bone

### BIOFOAM® CANCELLOUS TITANIUM™ Material



### Better Bone Ingrowth



Sintered Beads

BIOFOAM® Metal Fixation

## A-CLASS® Advanced Metal with BFH® Technology

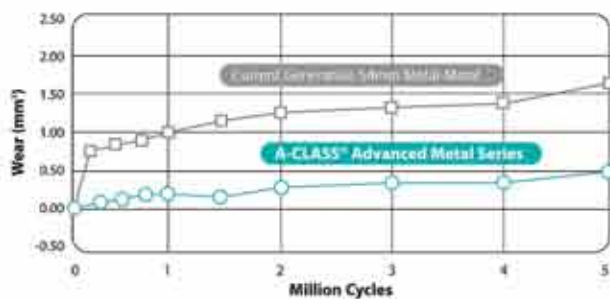
### Wear Less

- 90% reduction in run-in wear and a 68% reduction in lifetime wear<sup>2</sup>
- One study observed 47% reduction in chromium metal ions versus Wright's standard metal-on-metal devices at 2 years.<sup>3</sup>
- Patented Differential Hardness

2. Compared to Wright's standard metal on metal devices at 24 months. Data on file at Wright. After 5 million cycles using wear simulator.

3. Two Year Results of the A-CLASS® Advanced Metal-on-Metal Bearing Serum Ion Study. Podium Presentation at 54th Annual Meeting of Orth Res Society. March 2, 2008. Paper No. 60.

### A-CLASS® Advanced Metal with BFH® Technology<sup>3</sup>



**DYNASTY®**  
Acetabular Cup System

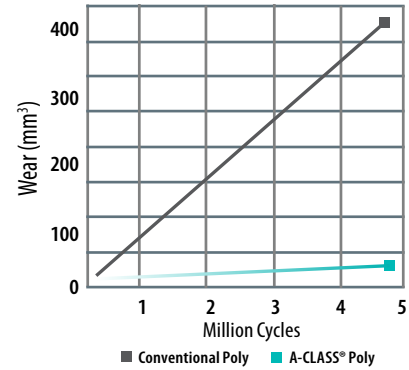
# Wright's A-CLASS® Poly Liners

## Wear Less.

- No Oxidation<sup>4</sup>
- Undetectable Free Radicals<sup>4</sup>
- 92% or Greater Reduction in Wear<sup>5</sup>

4. Data on file at Wright.

5. Compared to conventional poly. Data on file at Wright.

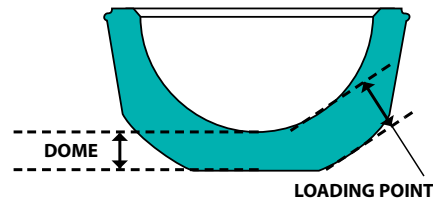


## Polyethylene Thickness

Poly Liner	Poly Liner Size	Regions of Critical Thickness	
		Loading	Dome
DYNASTY® Group B	28mm	8.7	7.5
DYNASTY® Group C	32mm	7.6	6.5
DYNASTY® Group D	36mm	8.0	7.4
DYNASTY® Group E	38mm	8.0	7.5
DYNASTY® Group F	40mm	7.9	7.5
DYNASTY® Group G	42mm	7.9	7.6
DYNASTY® Group H	46mm	8.6	8.7
DYNASTY® Group J	50mm	8.9	8.9
DYNASTY® Group K	54mm	9.0	9.0
DYNASTY® Lipped Group B	28mm	8.7	7.5
DYNASTY® Lipped Group C	32mm	7.6	6.6
DYNASTY® Lipped Group D	36mm	8.1	7.5
DYNASTY® Lipped Group E	38mm	8.1	7.6
DYNASTY® Lipped Group F	40mm	8.0	7.7
DYNASTY® Lipped Group G	42mm	8.0	7.8
DYNASTY® Lipped Group H	46mm	8.6	8.7
DYNASTY® Lipped Group J	50mm	8.9	8.9
DYNASTY® Lipped Group K	54mm	9.0	9.0
DYNASTY® Group E	36mm Rev.	9.0	8.5
DYNASTY® Group F	36mm Rev.	9.9	9.5
DYNASTY® Group G	36mm Rev.	10.8	10.5
DYNASTY® Group H	36mm Rev.	13.2	13.3
DYNASTY® Lipped Group E	36mm Rev.	9.0	8.5
DYNASTY® Lipped Group F	36mm Rev.	9.9	9.5
DYNASTY® Lipped Group G	36mm Rev.	10.8	10.5
DYNASTY® Lipped Group H	36mm Rev.	13.2	13.3

## Head / Liner Sizing Options

	Head Size		
	Shell Size	Metal Liner	Poly Liner
DYNASTY® BIOFOAM® Shell	46mm	32	28
DYNASTY® BIOFOAM® Shell	48mm	32	28
DYNASTY® BIOFOAM® Shell	50mm	36	32
DYNASTY® BIOFOAM® Shell	52mm	38	36
DYNASTY® BIOFOAM® Shell	54mm	40	38
DYNASTY® BIOFOAM® Shell	56mm	42	40
DYNASTY® BIOFOAM® Shell	58mm	44	42
DYNASTY® BIOFOAM® Shell	60mm	44	42
DYNASTY® BIOFOAM® Shell	62mm	44	42
DYNASTY® BIOFOAM® Shell	64mm	48	46
DYNASTY® BIOFOAM® Shell	66mm	48	46
DYNASTY® BIOFOAM® Shell	68mm	48	46
DYNASTY® BIOFOAM® Shell	70mm	52	50
DYNASTY® BIOFOAM® Shell	72mm	52	50
DYNASTY® BIOFOAM® Shell	74mm	52	50
DYNASTY® BIOFOAM® Shell	76mm	56	54



**Wright Medical Technology, Inc.**  
 5677 Airline Road  
 Arlington, TN USA 38002  
 901.867.9971 phone  
 800.238.7188 toll-free  
 www.wmt.com

**Wright Medical EMEA**  
 Krijgsman 11  
 1186 DM Amstelveen  
 The Netherlands  
 011.31.20.545.0100  
 www.wmt-emea.com

™Trademarks and \*Registered marks of Wright Medical Technology, Inc.  
 ©2009 Wright Medical Technology, Inc. All Rights Reserved.